



ReWaste
Reuse, Repurpose, Renew.

DAMIEN BASSETT
MANAGER WASTE TO ENERGY SERVICES

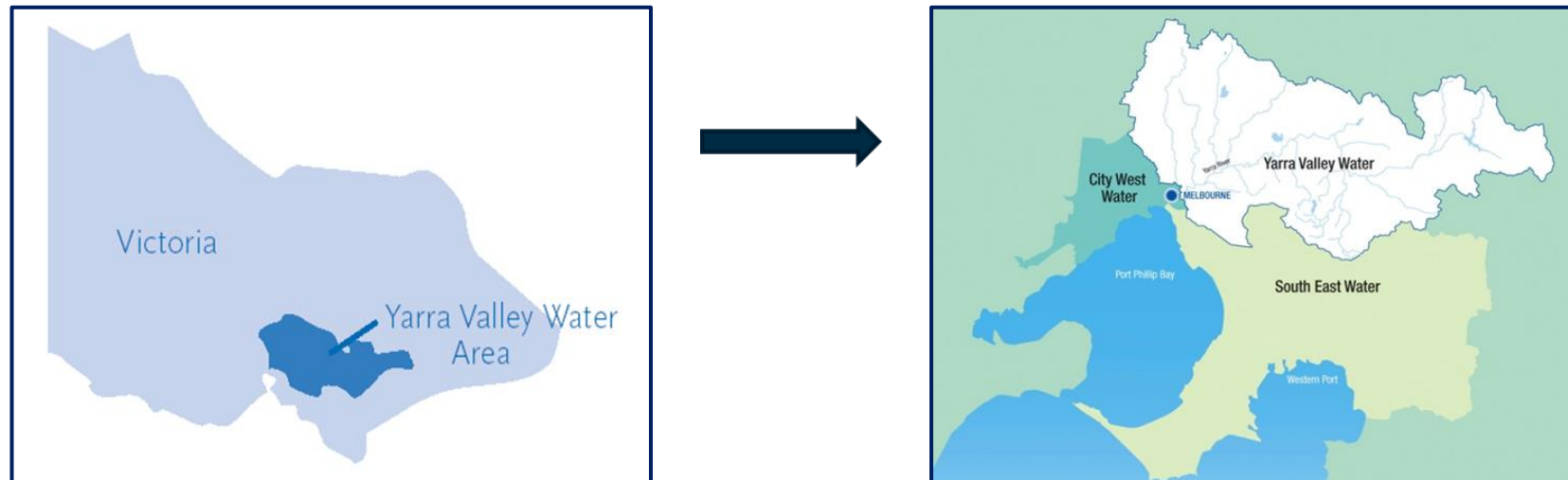




ReWaste

Reuse, Repurpose, Renew.

ABOUT YARRA VALLEY WATER



Melbourne's largest water retailer/distributor
Serving 1.8 million customers (30% Victoria)
Revenue \$900M pa, Assets \$4.2B
19,200 km of water & sewerage pipes
540 employees



WASTE TO ENERGY JOURNEY

2011



YVW BEGINS TO INVESTIGATE "RESOURCE RECOVERY"



2015

WASTE TO ENERGY FACILITY CONSTRUCTION BEGINS

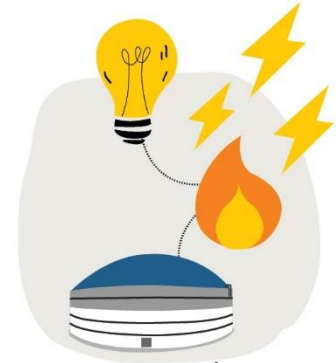


JUNE 2016
REWASTE BUSINESS IS ESTABLISHED



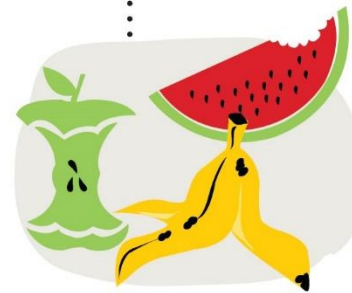
NOVEMBER 2016

FOOD WASTE IS ADDED AT 10 TONNES PER DAY



SEPTEMBER 2016

START FILLING DIGESTORS



190 TRUCKS OVER 10 WEEKS

6 MILLION LITRES OF SLUDGE

FULLY OPERATIONAL BY APRIL 2017

BIOGAS PRODUCED IS USED TO CREATE CLEAN, GREEN SUSTAINABLE ENERGY

REWASTE WILL REDUCE GREENHOUSE GAS EMISSIONS AND RECYCLE APPROXIMATELY 33,000 TONNES OF ORGANIC WASTE EVERY YEAR





ReWaste

Reuse, Repurpose, Renew.

- Facility accepts trucked organic solid and liquid wastes from commercial sources.
- The facility will process over 33,000 tonnes of organic waste per year.
- Peak electricity generating capacity of 1-Megawatt.
- Facility will process the waste through two anaerobic digesters to produce methane-rich biogas. Single Stage – Mesophilic process.
- The biogas is fed into 2 combined heat and power engines which supply electricity to both the neighboring sewage treatment plant, with the surplus going to the electricity grid.
- By product of process is Digestate which is being trialed with a fertilizer manufacturer as a nutrient booster.

